

■ **Walt Disney's Comics and Stories – Vol. 16 No.4
(February 1954)**

Evaluation Date: April 2, 2026



SUMMARY OF OBSERVATIONS

This comic retains the front cover, back cover, centerfold, all photographed interior pages, and both original staples. The front cover shows strong remaining gloss and vivid color saturation. Interior pages exhibit cream to light-tan paper coloration with clear artwork and legible text throughout. The spine remains continuous and aligned.

Observed condition issues are concentrated at the **spine edge** and **staple locations**, where **measured cracking, localized paper loss, and metal oxidation** are visible. Despite these defects, the binding remains intact, the centerfold is attached, and the paper retains flexibility as demonstrated by the brittleness test.

FRONT COVER — OBSERVATIONS

Walt Disney's Comics and Stories – Vol. 16 No. 4 (February 1954)

Photo Condition & Quality:

Clear, well-lit image showing the full front cover with all edges, corners, and spine visible. The image shows a single-panel cover illustration with Donald Duck standing on a brick wall while three nephews kneel below handling wet cement; a solid green background occupies the lower half and a light blue field fills the upper portion.

Observations:

The front cover retains **high surface gloss**, visible as specular reflection across the blue sky area and the green lower field. Color saturation remains strong in the blue, green, yellow, orange, and red areas, with clean ink boundaries and no visible ink bleed.

Along the **spine edge**, multiple **vertical stress cracks** are visible. Individual cracks measure **approximately 2–6 mm in vertical length**, with several openings widening to **~1–2 mm**, exposing lighter underlying paper fibers. Near the mid-to-lower spine region, **localized paper loss** interrupts the fold, affecting **approximately 4–7 mm of spine length** at its largest point.

The **bottom edge** shows light edge abrasion affecting **approximately 6–12 mm intermittently**, with surface thinning but no full-thickness loss. Corner rounding is present on all four corners. The **lower spine-side corner** shows rounding extending **~5–7 mm**, while the remaining corners show rounding of **~3–5 mm**, without fiber separation.

No diagonal creases or breaks extend into the main artwork field.

Overall Impression:

The front cover remains visually striking, with **strong gloss and vivid color**, offset by **measured spine cracking and localized paper loss**.

BACK COVER — OBSERVATIONS

Walt Disney's Comics and Stories – Vol. 16 No. 4 (February 1954)

Photo Condition & Quality:

Clear image showing the full back cover advertisement. The image depicts a single advertisement layout with Mickey Mouse standing at left and a large illustrated booklet at right, set against a light tan background.

FREE!

Walt Disney's TRUE-LIFE ADVENTURES
Bear Country

FREE!! This beautiful 28 page book in full color. Walt Disney's true-life adventure **Bear Country** (SIZE 5 1/2" x 6 5/8") with each subscription to Walt Disney's Comics and Stories.

1-Year Subscription (12 issues)	\$1.00	2-Year Subscription (24 issues)	\$1.75
3-Year Subscription (36 issues)	\$2.50	5-Year Subscription (60 issues)	\$4.00

FOREIGN POSTAGE \$1.00 Additional Per Year
 PAN-AMERICAN UNION POSTAGE 25c Additional Per Year
 CANADIAN POSTAGE 90c Additional Per Year

K. K. PUBLICATIONS, Inc. Dept. 2 POUGHKEEPSIE, N. Y.

Enclosed find ^{money order} check for \$ _____ covering _____ subscriptions.
 (Please print name and address plainly.)

Send a _____ year subscription to "Walt Disney's Comics and Stories" to:
 Name _____ Street _____ City _____ Zone _____ State _____
 Check here if this is a renewal subscription

Send a _____ year subscription to "Walt Disney's Comics and Stories" to:
 Name _____ Street _____ City _____ Zone _____ State _____
 Check here if this is a renewal subscription

Gift Card to read from _____ Donor's Name _____ Address _____ City _____ State _____

Use plain sheet of paper for additional subscriptions, incorporating the above data.

Observations:

The back cover remains intact with no large missing sections. The background paper shows **uniform tan toning**, darker near the outer edges. No defined tide lines, cockling, or paper distortion are visible.

Edge wear is present along the bottom and spine edges, affecting **approximately 5–15 mm intermittently**. Corners show rounding of **~4–6 mm**. Surface inspection shows light, evenly distributed surface soiling without localized dark spots or border-defined staining.

Overall Impression:

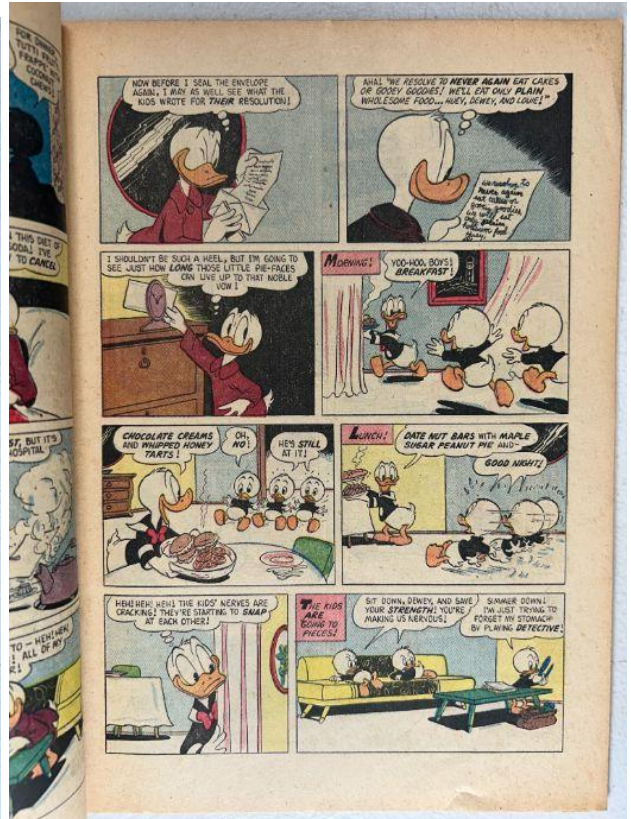
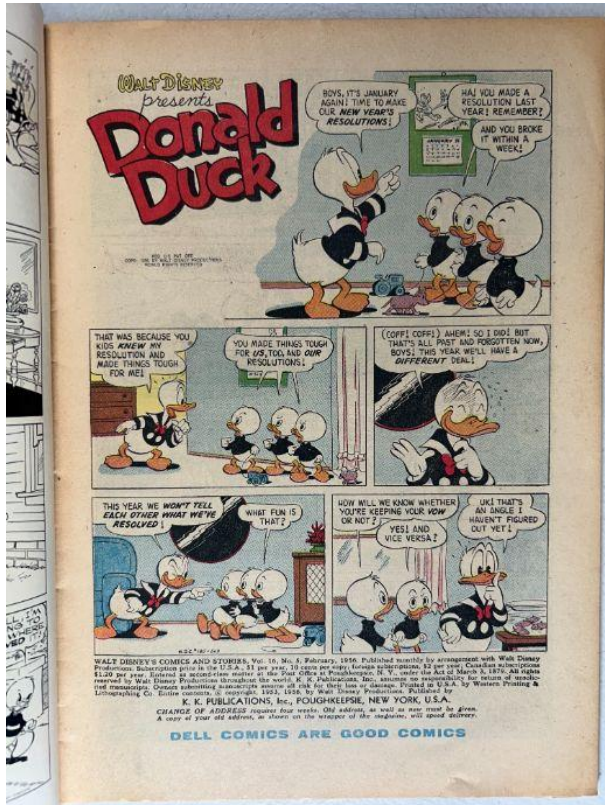
The back cover shows **uniform age toning and light handling wear**, with no evidence of moisture staining or structural loss.

INTERIOR PAGES — OBSERVATIONS

Walt Disney's Comics and Stories – Vol. 16 No. 4 (February 1954)

Photo Condition & Quality:

Multiple interior pages are shown flat. Images depict multi-panel comic pages with rectangular panels arranged in grid layouts, featuring Donald Duck and other characters in indoor and outdoor settings with speech balloons present.



Observations:

Interior pages exhibit **cream to light-tan paper coloration**, lighter near the gutters and darker toward the outer margins. The toning pattern is consistent across photographed pages and does not present as isolated patches.

Color reproduction remains strong, with blues, reds, greens, and yellows retaining clarity. Black linework remains crisp and legible. Several pages show **bottom-margin waviness** affecting segments of **approximately 10–25 mm**, without sharp creasing or fiber breakage. Lower outer corners show small bends extending **~4–6 mm** inward.

No interior tears, writing, ink transfer, or moisture-related distortion are visible.

Overall Impression:

Interior pages are **complete, readable, and visually strong**, with **uniform age toning and minor handling wear**.

CENTERFOLD — OBSERVATIONS

Walt Disney's Comics and Stories – Vol. 16 No. 4 (February 1954)

Photo Condition & Quality:

Clear image showing the two facing centerfold pages with the central gutter visible. The image depicts a continuous comic sequence across both pages.

Observations:

Both original staples pass through the centerfold. The fold line shows **light compression** extending **~1–2 mm** on either side. Staple perforations remain close to original size, with no enlargement exceeding **~1 mm**. No tearing or paper loss is visible at the fold.

No rust staining or discoloration extends into the surrounding centerfold paper.

Overall Impression:

The centerfold remains **securely attached and structurally intact**.

SPINE — OBSERVATIONS

Walt Disney's Comics and Stories – Vol. 16 No. 4 (February 1954)

Photo Condition & Quality:

Side-profile image shows the full spine length resting on a rack, allowing clear view of alignment and surface wear.



Observations:

The spine is straight and continuous. **Multiple vertical cracks** are visible, each affecting **~2–6 mm** of vertical length. One area of **paper loss** near the center of the spine affects **~4–7 mm** of spine length. No complete spine splits are present.

Overall Impression:

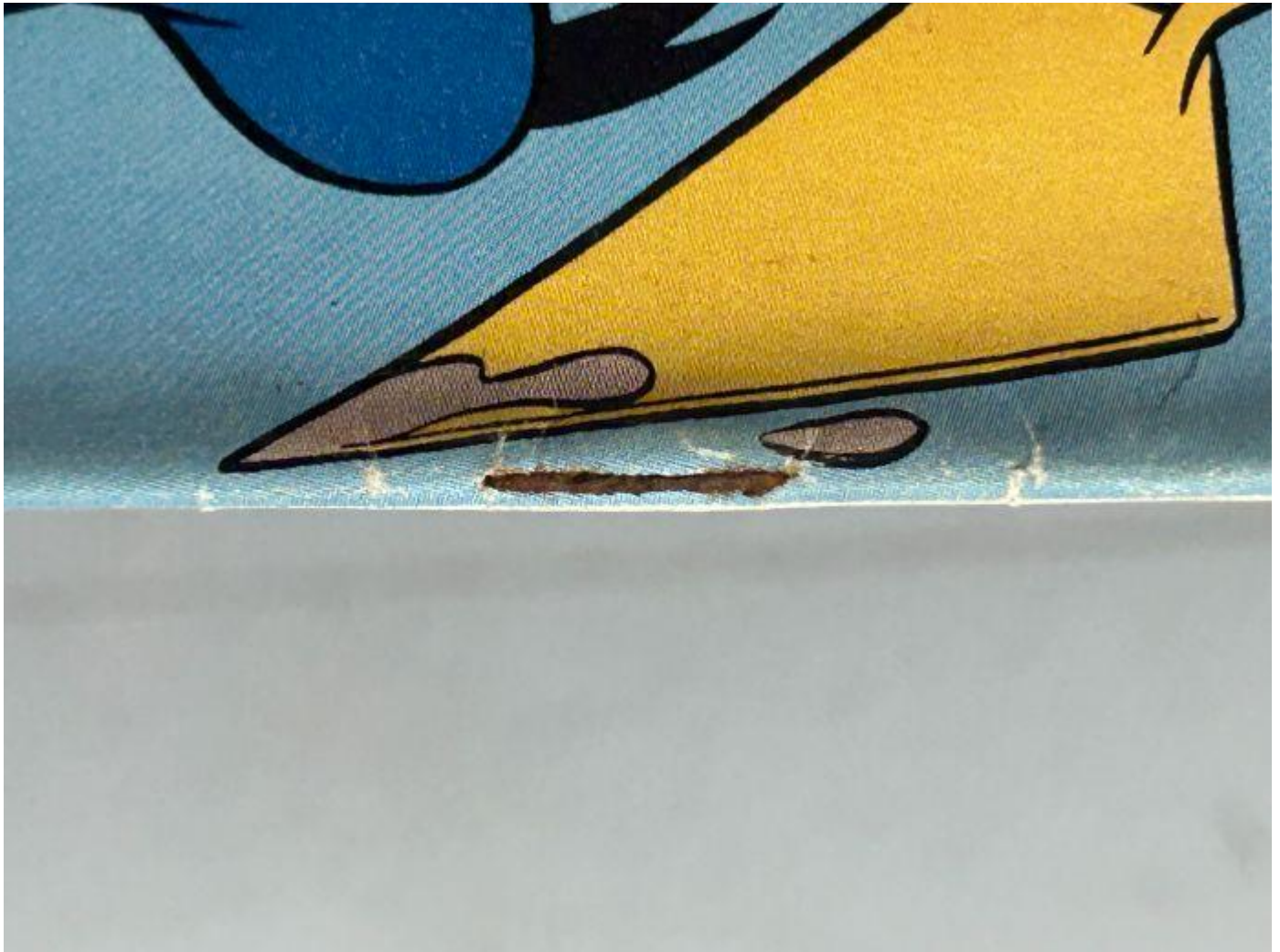
The spine shows **measured cracking and localized loss**, while remaining structurally continuous.

UPPER STAPLE — OBSERVATIONS

Walt Disney's Comics and Stories – Vol. 16 No. 4 (February 1954)

Photo Condition & Quality:

Macro image showing the upper staple and surrounding paper fibers.



Observations:

The upper staple exhibits **moderate oxidation**, with darkened metal visible across much of the staple surface. Adjacent paper shows discoloration extending **~2–3 mm** from the staple crown. No tearing or slot enlargement beyond **~1 mm** is visible.

Overall Impression:

Upper staple remains functional with **oxidation and limited adjacent paper disturbance**.

LOWER STAPLE — OBSERVATIONS

Walt Disney's Comics and Stories – Vol. 16 No. 4 (February 1954)

Photo Condition & Quality:

Macro image clearly shows the lower staple and adjacent paper.



Observations:

The lower staple shows oxidation comparable to the upper staple. Surrounding paper remains intact, with no tearing or slot enlargement exceeding **~1 mm**.

Overall Impression:

Lower staple remains functional with **oxidation present and no structural compromise observed**.

BRITTLENESS TEST — OBSERVATIONS

Walt Disney's Comics and Stories – Vol. 16 No. 4 (February 1954)

Photo Condition & Quality:

Clear image showing a page corner flexed outward.



Observations:

The page corner flexes smoothly over an arc of **approximately 25–35 mm**. No audible cracking, fiber fracture, or flaking is visible. The page partially rebounds toward flat after release.

Overall Impression:

The paper is **not brittle** and retains good flexibility.